



Site Map

Black Hills National Forest

Home

- Special Places
- Recreation
- Alerts & Notices
- Passes & Permits
- Maps & Publications
- Land & Resources Management
- Learning Center
- Working Together
- About the Forest
- News & Events

Contact Information



US Forest Service
Black Hills National Forest
1019 N. 5th Street
Custer, SD 57730
605-673-9200

Dial 711 for
Telecommunications
Relay Services

District Offices

Visitor Center

Employment

Contact Us

The Black Hills, in western South Dakota and northeastern Wyoming, consists of 1.2 million acres of forested hills and mountains, approximately 110 miles long and 70 miles wide.

The Forest has four Ranger Districts and a Forest Supervisor's Office. Offices are located in Sundance and Newcastle, Wyoming and Custer, Rapid City and Spearfish, South Dakota.

The Black Hills rise from the adjacent grasslands into a ponderosa pine forest. Described as an "Island in the Plains," the Forest has diverse wildlife and plants reaching from the eastern forests to the western plains. The Forest is a multiple-use Forest with activities ranging from timber production, grazing, to hiking, camping, mountain biking, horseback riding, rock climbing, mining, wildlife viewing and many others.

Enjoy yourself while viewing the many rugged rock formations, canyons and gulches, open grassland parks, tumbling streams, and deep blue lakes. Millions of visitors come to the Black Hills each year to experience the rich and diverse heritage.



Timber Sustainability on the Black Hills National Forest



Black Hills National Forest Christmas tree permits are available to purchase either online at [Recreation.gov](https://www.recreation.gov) (\$2.50 processing/transaction fee) or from private vendors throughout the Black Hills. [Learn more](#)

Fire Danger TODAY

Northern Hills
VERY HIGH

Central Hills
VERY HIGH

Southern Hills
VERY HIGH

Fire Information

Quick Links

- Fire Management
- Forest Service Outreach Database
- Timber Sales
- Open Government Reading Room
- Black Hills Parks & Forests Association

Alerts & Warnings

- Current Forest Conditions & Closures
- Please Use Caution When Entering the Black Elk Wilderness
- Martin Trail System Trail Closures
- Black Hills National Forest COVID-19 Updates
- Attention Cavers and Spelunkers

[View All Forest Alerts ...](#)

Other

Follow Us on Twitter

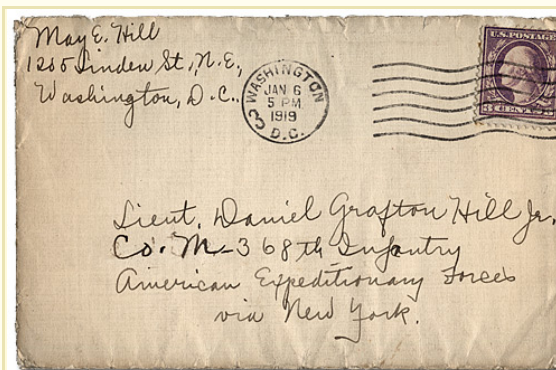
Tweets by @BlackHillsNF

Black Hills NF @BlackHillsNF
No additional ignition is planned today (12/8/20) on the Beartown RX, SW of Spearfish, SD. Crews stayed on the project overnight & will continue to patrol & monitor the project area for the next several days. (Photos: Beartown RX, taken 12/7/20, by Brian Rafferty, Black Hills NF)



Black Hills NF @BlackHillsNF
Firefighters have successfully completed ignitions and burned 140 acres today on the

Battle for Bats - Fighting WNS



Sign Up: [Black Hills National Forest News Mailing List](#)

We are hiring on the Black Hills National Forest!
Temporary non-fire & field positions

December 1 - 11, 2020

Photo by Matt Davey-Karlson

IMPORTANT FOREST UPDATES:

- Forest Service Coronavirus Updates
- Sign up to receive Text messages on significant fire activity on the Forest
- Current Forest Road & Trail Closures & Conditions (updated November 4, 2020)
- Want to Fly a Drone?

Black Hills Resilient Landscapes Project Implementation

Introduction

This map displays the status of commercial timber harvest authorized by the 10th project decision.

Planning areas for future timber harvests are displayed on the map as large blocks of land (yellow shading for fiscal year 2019 sales, brown shading for fiscal year 2020 sales). Foresters will visit individual stands within these planning areas to assess timber potential. The final timber sale harvest units will be scattered across the landscape of each planning area.

When the planning phase is complete and the timber sale has been sold, the map displays the individual harvest units (orange outlined) instead of the planning areas. Select any of the timber planning or harvest areas for more information on sale or area name, harvest type, date sold or completed, and acreage.

*Harvest type definitions:
Overstory removal (off from advanced regeneration)
Removes most or all of the stand bearing trees after young trees have become established.

Black Hills Resilient Landscapes Project Implementation Story Map

MTJF | BLACK HILLS
from *More Than Just Forests*

BLACK HILLS

03:28

vimeo

MTJF | BLACK HILLS from [Your Forests Your Future](#) on Vimeo.

PLAN Your Visit!

GOT a Map?

NEED a Recreation Pass?

Forest Happenings

The [Black Hills National Forest Visitor Map](#) is available for use with iOS Mobile Devices (iPad, iPhone, iPod Touch) or Android (4.0.3 or newer).

Off Highway Vehicle (OHV) Information

- Motor Vehicle Use Map Information
- OHV Riding & Camping Information

Motorized Trail Permits may be purchased at the Black Hills and Badlands Visitor Center, located off Exit 61 on I-90 just east of Rapid City, **online**, from a **local vendor** or at any Black Hills National Forest Service office.

Non-Motorized Trail Strategy



Recent News

Subscribe to this feed

- Apply Now for Summer 2021 Temporary Positions on the Black Hills National Forest
Release Date: Dec 7, 2020
- Northern Hills to Continue Prescribed Burn Southwest of Spearfish, SD
Release Date: Dec 4, 2020
- Black Hills Resource Advisory Committee to Accept Project Proposals
Release Date: Dec 3, 2020
- Forest Service Plans Prescribed Burn Near Hill City, SD
Release Date: Dec 1, 2020
- Northern Hills to Continue Prescribed Burn Southwest of Spearfish, SD
Release Date: Nov 30, 2020

Features

Historic Forest Photo Archive

A Black Hills National Forest & Black Hills State University partnership has made a historic Forest photo archive accessible for the public. Over 10,000 images are available for viewing and downloading on the Digital Library South Dakota website at: <https://explore.digitalsd.org/digital/collection/BHNF/search>

Black Hills Resilient Landscapes Project

The Black Hills Resilient Landscapes project decision includes reduction of hazardous fuels, prescribed burning, enhancement of hardwoods and grasslands, timber harvest, non-commercial thinning, and associated actions.

[View All Features](#)

Spotlights

Use of UAS's or Drones

"Know Before You Fly" and learn about drone usage Do's & Don'ts on National Forest land.

Norbeck Wildlife Preserve - Celebrating 100 Years

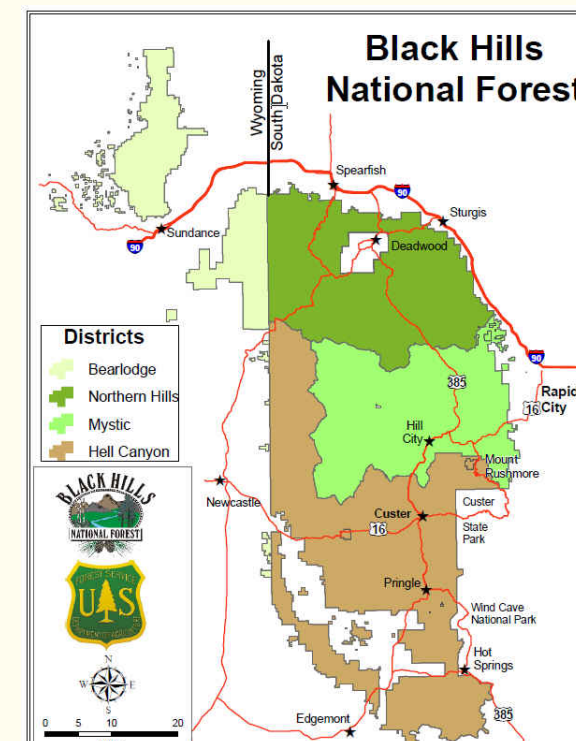
Interagency Video celebrating the 100 year anniversary of the Norbeck Wildlife Preserve: <https://www.facebook.com/norbeckwildlife>

Interested in Volunteering?

Learn about many volunteer opportunities available on the Black Hills and across the country! [Click Here](#)

Forest Service Job Openings

Interested in a career with the Forest Service? Check out the latest FS job openings available across the country on USAJOBS.



Black Hills National Forest Districts Map